

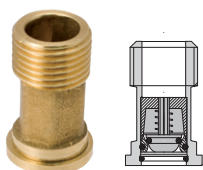
ACCESSORI PER CONTATORI D'ACQUA - WATER METERS ACCESSORIES



mod. **RAC**

Set di raccordi per contatori d'acqua (2 dadi, 2 cannotti, 2 guarnizioni)
Set of connectors for water meters (2 nuts, 2 tailpieces, 2 gaskets)

DN mm	15 (1/2")	20 (3/4")	25 (1")	32 (1"1/4)	40 (1"1/2)	50 (2")
-------	-----------	-----------	---------	------------	------------	---------

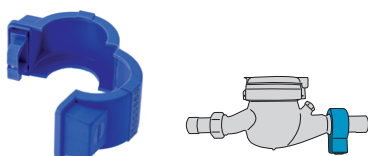


mod. **BKM**

Cannotto per contatore d'acqua con valvola di non ritorno incorporata
Da montare al condotto d'uscita del contatore d'acqua a getto singolo
Minima pressione di lavoro - 0,05 bar / Massima pressione di lavoro - 16 bar

*Tailpiece for water meters with no-return valve built in.
Available for the outlet of the water meters Minimum working pressure - 0,05 bar / Maximum working pressure - 16 bar*

DN mm	15 (1/2")	20 (3/4")	-	-	-	-
-------	-----------	-----------	---	---	---	---



mod. **SAF**

Sigillo anti-frode in plastica per contatori d'acqua
Anti-tampering plastic seal for water meters

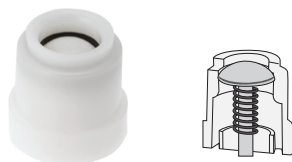
DN mm	15 (1/2")	20 (3/4")	25 (1")	-	-	-
-------	-----------	-----------	---------	---	---	---



mod. **NRV-S**

Valvola di non ritorno per contatori a getto singolo
No-return valve for single jet water meters

DN mm	15 (1/2")	20 (3/4")	-	-	-	-
-------	-----------	-----------	---	---	---	---



mod. **NRV**

Valvola di non ritorno per contatori a getto multiplo
No-return valve for multi jet water meters

DN mm	15 (1/2")	20 (3/4")	25 (1")	-	40 (1"1/2)	-
-------	-----------	-----------	---------	---	------------	---



mod. **KSB**

Staffa con raccordi di ottone (lunghezza regolabile)
Bracket set with brass connectors (adjustable length)

DN mm	15 (1/2")	20 (3/4")	25 (1")	32 (1"1/4)	40 (1"1/2)	-
-------	-----------	-----------	---------	------------	------------	---