

mod. **SAF**

Sigillo anti-frode in plastica per contatori d'acqua

Anti-tempering plastic seal for water meters

ITA

Caratteristiche Tecniche

Materiale: Polipropilene MOPLEN

Resistente a:

- Prodotti chimici
- Sostanze acide
- Sostanze alcaline
- Solventi organici
- Sali
- Agenti atmosferici
- Radiazioni ultraviolette

Resistenza termica: $-30^{\circ}\text{C} \div +80^{\circ}\text{C}$

Durezza: 3000-3400 N/cm²

ENG

Technical Features

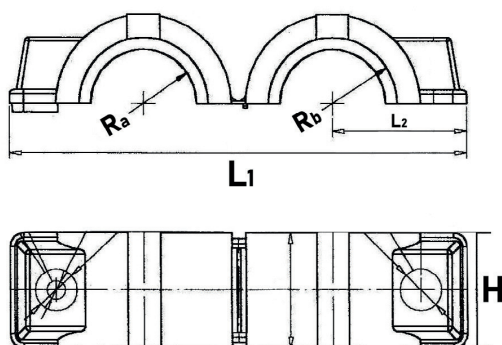
Material: MOPLEN Polypropylene

- Chemicals resistant
- Acids resistant
- Alkalis resistance
- Salts resistant
- Weather resistant
- Organic solvents resistant
- Ultraviolet radiations resistant

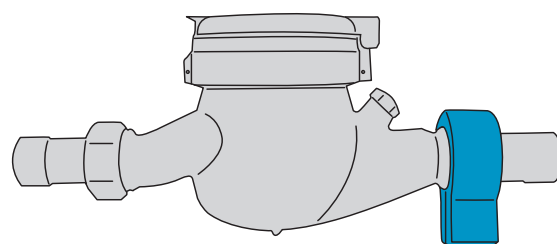
Temperature resistance: $-30^{\circ}\text{C} \div +80^{\circ}\text{C}$

Hardness/Strenght: 3000-3400 N/cm²

Dimensioni (mm) - Dimensions (mm)



DN	15 (1/2")	20 (3/4")	25 (1")
L1	99	121	158
L2	29	34,5	43
Ra	11,5	15	34
Rb	14	19	34
H	24,5	24,5	31,3



Esempio d'installazione su contatore d'acqua a getto multiplo
Example of installation on a multi jet water meter