

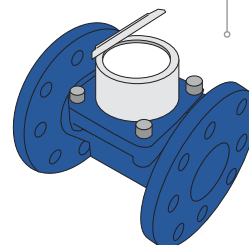
mod.

# IWM-PL4

Electronic pulse emitter module  
for Woltmann meters with inductive interface



Compatible water meters



mod. WDE-K50

## ENG

### Description

The IWM-PL4 is suitable for remote reading applications in commercial and industrial sectors, acting as an electronic pulse-emitter. It allows the acquisition of the consumption of the counter by third-party systems with a universal interface and integrating advanced counting functions and fraud detections. The use of an inductive target at the counter excludes the possibility of magnetic fraud and makes the application insensitive to the pipes vibrations.

The IWM-PL4 is compatible with all the pre-equipped Woltmann meters and allows:

- Consumption analysis (with incremental and decremental counting), Reverse flow compensation can be activated for an always perfect alignment between the counter and counter clock.
- Checking frauds (cable cut and removal, application of external magnetic field, reverse flow). The presence of reverse flow can be monitored with a dedicated impulse contact.
- Dedicated dosing function available for industrial applications.
- IP68 protection\* allows the use of the module also for meters installed in harsh environments.
- NFC interface allows high flexibility of configuration, allowing setting of the output pulse ratio in total autonomy through smartphone app (available ratio values: multiples of the index value), and being able to configure the duration of the output pulse according to the sensitivity of the acquisition system.

### Technical features

Output signal	Supply: maximum 30VDC (100mA) Type: polarized open-collector
Cable length	1.5 meters (4 conductors)
Compatible water meters	WDE-K50
Pulse output minimum value (K)	10 liters (up to DN125) or 100 liters (from DN150)
Energy supply	Non-replaceable lithium battery, max lifetime 10 years*
Protection class	IP68**
Weight	160 g
Size (l x p x h, cable excluded)	100 x 100 x 25 mm
Working Temperature	+1° / +55°C
Module programming requirements	Android device (smartphone, tablet, etc.) with a NFC interface and the NFC IWM Config APP freely downloadable from GOOGLE PLAY

\* The battery life strongly depends on the working time window, set during the configuration process, and on the environmental conditions.

\*\* IP68: maximum 24 hours of continuous submersion at 1 m depth.

