



mod. GMB-I

Certificazioni — Certifications
Certifications — Certificaciones



Funzionalità — Features



ITA

Getto multiplo, quadrante bagnato, trasmissione diretta. Predisposizione induttiva per l'installazione di moduli di trasmissione dati M-BUS cablati, wireless M-BUS, lancia impulsi di tipo amagnetico e LoRa.

ESP

Chorro múltiple, esfera húmeda, de transmisión directa. Predisposición inductiva para módulos de telemetría M-Bus cable y wireless M-BUS, de pulsos no magnético y LoRa.

ENG

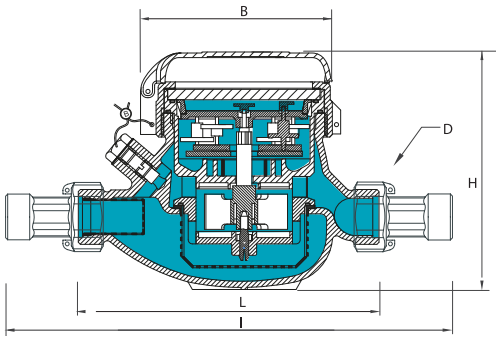
Multi-jet, wet dial, direct transmission. Inductive pre-equipment for the installation of data communication modules M-BUS wired and wireless M-BUS, non-magnetic pulse output and LoRa.




FRA

Jet multiple, cadran noyé, entraînement directe. Pré-équipement inductif pour modules de télérelèvement M-Bus filaire et radio M-BUS, avec émetteur d'impulsions amagnétique et LoRa.

Moduli compatibili — Compatible modules

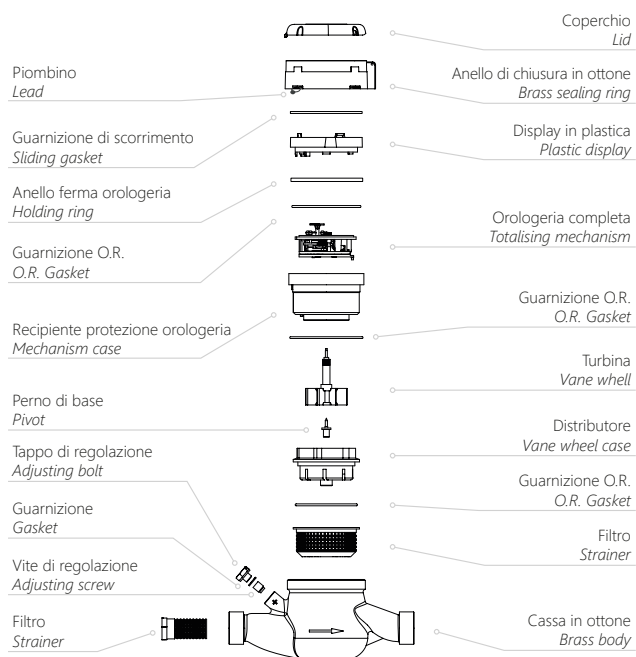


Dimensioni e pesi - Dimensions and Weights		Calibro - Size	DN (in)	15 (1/2")	20 (3/4")	25 (1")	25 (1")	32 (1 1/4)	40 (1 1/2)	50 (2")
 <p>Filettatura/Threading: EN ISO 228-1:2003 I contatori DN50 possono essere forniti flangiati secondo ISO 7005-2 / EN 1092-2 PN16 The DN50 meters can be supplied flanged according to ISO 7005-2 / EN 1092-2 PN16</p>	L	mm	110-145-165-190	190	260	260	260	300	300	
	I	mm	190-225-245-270	288	360	360	380	440	460	
	H	mm	109	111	117	117	117	153	172	
	B	mm	100	100	104	104	104	126	160	
	D	in	3/4"	1"	1 1/4	1 1/4	1 1/2	2"	2 1/2	
	Pesi Weight	Kg	1,18-1,41	1,40	2,09	2,09	2,18	4,38	4,46-9,40	

Posizione d'installazione - Installation position		
		
R100H↑ *R160H↑	R40H→	R50V

Calibro - Size		DN (in)	15 (1/2")	20 (3/4")	25 (1")	32 (1 1/4)	40 (1 1/2)	50 (2")
↑	Portata di sovraccarico Overload flow rate	Q ₄	m ³ /h 3,125	5	7,875	12,5	20	31,25
	Portata permanente Permanent flow rate	Q ₃	m ³ /h 2,5	4	6,3	10	16	25
↑	Portata di transizione Transitional flow rate	Q ₂	L/h 40	64	100,8	160	256	400
	Portata minima Min flow rate	Q ₁	L/h 25	40	63	100	160	250

↑	Portata di transizione Transitional flow rate	Q ₂	L/h 25	40	63	100	160	250
	Portata minima Min flow rate	Q ₁	L/h 15,63	25	39,38	62,5	100	156,25
Sensibilità Sensitivity		L/h	6	10	20			
Letture minima Min reading		L	0,05					
Letture massima Max reading		m ³	99.999				999.999	
Pressione max ammissibile Max admissible pressure		bar	16					



Versione base — Basic version

- > R100H↑ R40VH→
- > Solo versione acqua fredda (0,1 °C - 50 °C)
- > Trasmissione meccanica
- > Lettura diretta su 5 rulli numeratori (6 rulli numeratori su DN40 e DN50)
- > Quadrante bagnato
- > Coperchio girevole a 360° (DN15-DN32)

- > R100H↑ R40VH→
- > Cold water version only (0,1°C-50°C)
- > Mechanical transmission
- > Direct reading on 5 numeric rolls (6 numeric rolls on DN40 and DN50)
- > Wet dial
- > 360° rotating lid (DN15-DN32)

Su richiesta — Upon request

- > R160H↑ R40VH→

- > R160H↑ R40VH→